



# Mindarie Primary School

**Newsletter #2**  
**16 February 2018**

Mindarie Primary  
School

Ph: 9407 1100

90 Rothesay Heights  
Mindarie WA 6030

[www.mindarie  
primary.wa.edu.au](http://www.mindarie<br/>primary.wa.edu.au)

[mindarie.ps  
@education.wa.edu.au](mailto:mindarie.ps<br/>@education.wa.edu.au)

[www.facebook.com/  
Mindarie Primary School](http://www.facebook.com/<br/>Mindarie Primary School)

## Diary at a Glance

<b>Tues 20 to Thurs 22 Feb</b>	<b>School Photos</b>	
<b>Thursday, 22 February</b>	<b>Assembly: TA 28/29</b>	<b>8.45am</b>
<b>Monday, 26 February</b>	<b>Board Nominations close</b>	
<b>Monday, 5 March</b>	<b>Labour Day Public Holiday</b>	<b>NO STUDENTS</b>

## Message from the Principal

Dear Parents and Caregivers,

What a fantastic first few weeks we have had at Mindarie Primary. It is fantastic to see our students so involved in their learning and eager to participate in the activities available for them; in class and at break times.

We now have four clubs running each week during lunch time. Mr Burns is running 'Belly Busters' one lunch break each week. Mrs Parker is hosting dancing in the undercover area one lunch break each week and Mrs Em and Mr Whitaker are running science clubs one lunch break each week, one for the junior students and one for the senior. In addition, we now have a schedule of activities occurring in the library each week at break times. Therefore, our students should always be able to find something of interest to participate in.

Our first assembly this year was a very exciting one. It was fantastic to see three of our new staff members entering into the spirit of things and entertaining the students with their very exciting item about how teachers get ready for school in the morning. I'm glad that they put on some protective clothing prior to eating!! Have a look at the photos in this newsletter and you will understand why.

Parents, can you please remind your children to walk bikes and scooters in the school grounds. It is a safety issue for others on the grounds and also for your own child. It also teaches students the social norms around large amounts of people.

We are very fortunate to have two staff members who are willing to share their dogs with the students at Mindarie Primary. The children love seeing the dogs in the office and also taking them for walks. It seems to be a growing trend in schools now and it is terrific to think that Mindarie Primary led the way in this initiative. We do however ask that you do not bring your own dogs onto the grounds. There are several reasons for this. The first and most important is that we would hate for a student to approach a dog and get a negative reaction because the dog was startled or frightened. This could have a very negative result for your dog. Thank you for supporting us in this matter.

At our regular staff meeting last Wednesday, staff again raised concerns about students playing on the equipment in the junior primary area before and after school. Parents, as you are with your children at this time, can you please enforce the signage that is on that equipment, that it is

Proud to be a  
**Waterwise  
School**



## **ADMINISTRATION**

**Barbara Bromley**

*Principal*

**Rebecca Appleton**

*Associate Principal*

**Belinda Bewick**

*Associate Principal*

**Andrea White**

*Associate Principal*

**Anne-Marie Rosa**

*Manager Corporate Services*

## **SCHOOL BOARD**

**Chris Erikson**

*Chair Person*

**Barbara Bromley**

*Principal*

**Anne-Marie Rosa**

*Minute Secretary*

### **Board Members**

Rebecca Appleton

Belinda Bewick

Melanie Cook

Andrew Crosby

Kath Gilbert

Ian Goodenough

John Purtill

Tracey Roberts

## **P&C COMMITTEE**

President

**Arian Daniels**

Vice President

**Michael Self**

Treasurer

**Clair Fordy-Clark**

Secretary

**Karyn Anderson**

WACSSO

**Melanie Cook**

Uniform Coordinator

**Clair Fordy-Clark**

***mpspandc2017@gmail.com***

**Uniform shop**

**Opening times**

**Wed 2.15 - 3.00**

**Fri 8.15 - 9.00**

not to be used before or after school. Again, thank you for your support in this matter.

Thank you to all the parents who attended the P&C meeting. It was great to see some new faces at the meeting. It was also terrific to hear that this year the P&C will again be organising a disco. We all know how much the students enjoy the opportunity to gather after school and have a dance. The running of a disco is always something that is done by the P&C, it is not a school organised event.

You will find in this newsletter a form calling for expressions of interest in becoming a general community member on the school board. If this is an area of interest to you please have a look at this form. Expressions of interest need to be emailed to me at [Barbara.Bromley@education.wa.edu.au](mailto:Barbara.Bromley@education.wa.edu.au) by 4.00pm Monday, 26 February. A panel of board members will then convene to review these.

Kind regards

Barbara Bromley  
Principal

## **NAPLAN Online Update**



The NAPLAN Online assessment uses a locked down browser to help ensure security during testing. The link provided below (also on the School Connect Page) takes you to demonstration tests for conventions of language (grammar, punctuation, and spelling), numeracy, reading and writing for each NAPLAN test year levels: 3, 5, 7 and 9. There is no Year 3 writing demonstration test as Year 3 students in 2018 will conduct the writing test using pen and paper.

<https://www.nap.edu.au/online-assessment/public-demonstration-site>

or

[goo.gl/5YHxMg](https://goo.gl/5YHxMg)

Try the practice tests at home and interact with the site with your children. By exposing them to the platform giving them as much practical experience with the test will ensure the best possible outcome when it comes time to complete NAPLAN Online in May this year.

If you have any questions, please feel free to see Mr Gould.

## MINDARIE PRIMARY SCHOOL BOARD

The Mindarie Primary School Board is now calling for expressions of interest from community members (these can be parents or others in the school community who have an interest in progressing Mindarie Primary) to utilize the following form to express their interest in becoming a General Community Member of the Board.

- Three positions are vacant.
- The period of membership is three years.

A Board needs to reflect-

- The nature of the student population including cultural, linguistic, economic and geographic factors relevant to the school.
- The roles and responsibilities of the board.
- The general community.

The roles of the Board are as follows-

<b>Role of the Board</b>	<b>Example skills that may be required</b>
Participate in the development, endorsement and review of the school budget and business plan	Strategic planning Budgeting History and context of the school Education and pedagogy Community engagement
Participate in processes to review school performance	Critical thinking Understanding data and reports Education and pedagogy Giving feedback Decision making
Participate in the development and endorsement of the school annual report	Community engagement Communications
Promote the school in the community	Community engagement Communications Ethical and responsible behaviour
Review of school policies	History and context of the school Education and pedagogy Community engagement

Please use the attached expression of interest form to register your interest.

Please note that some of the following demonstrable attributes could assist the board selection committee when they meet to review expressions of interest-

- Evidence of broader connections to the community, for example sporting clubs etc.
- Evidence of clear connections to the school, for example membership of committees, volunteer work etc.
- Prior board experience or governance experience.
- Marketing experience.

In order to support you in relation to school governance refer to the Website for the Business Plan, School Board Terms of Reference, Annual Report 2016 and Independent Review 2014.



Expression of Interest Form – General Community Member

## MINDARIE PRIMARY SCHOOL BOARD

Expression of Interest by a Candidate interested in being a General Community Member on the School Board.

I nominate myself as a candidate for selection to the Mindarie Primary School Board.

Name: \_\_\_\_\_

Address: \_\_\_\_\_

Occupation: \_\_\_\_\_

Candidates Statement

### Declaration of Candidate

I nominate myself as a candidate and if selected I will accept the responsibility of being a general community member.

Signed: \_\_\_\_\_ Date: \_\_\_\_\_

# A visible learner at Mindarie Primary School is responsible for:

🐾 where they are in their learning

🐾 where they are going

🐾 the steps needed to get there



## Visible Learners at Mindarie Primary School



### KISS AND DRIVE PROCEDURES

The **Kiss and Drive** on the north side of Abbeville Circuit is a great initiative in our mission to help ease the traffic issues that occur before and after school. We would love to see the Kiss and Drive used fairly and responsibly as it is a great tool in combating road safety issues around the school. We know that as members of our school community we rate our children's safety as a high priority.

**But what is a Kiss and Drive and how does it work?**

The idea behind a Kiss and Drive is that you drop off or pick up your children in a designated and safe position to the school.

The Mindarie Primary School **Kiss and Drive** consists of a number of car bays. Once a car enters the Kiss and Drive bays it moves to the most **forward** bay in the area. Children exit or enter the car at the left hand side (the safety door away from the road side).

Parents and carers remain in the vehicle, with the car only allowed to remain in the bay for a **maximum of two minutes!**

After school, you **only** enter the bays if you see your child ready. Remain in the car with the engine running. If you cannot see your child, drive on around the school and come back to the Kiss and Drive bays. **By arranging to meet your children five minutes after the siren you can be sure that they are waiting for you by the Kiss and Drive bays.**

This is a great opportunity for parents to avoid having to arrive early and find a place to park! This is also great for parents of older students who don't need to attend/wait outside the classroom.

# School Photos

Our school photo days are coming on Tuesday the 20<sup>th</sup>, Wednesday the 21<sup>st</sup> and Thursday the 22<sup>nd</sup> of February.

The recommended method of ordering your photos is online through Kapture's website as your payment is secure and can be easily verified at any time. If you pay online, there is no need to return the order envelope to school.

Alternatively you can pay by cash and return the provided envelope to the school on the photography day. Please note the photographers cannot open sealed envelopes and cannot provide change. Due to the sheer size of our school, this is not recommended and neither Kapture nor Mindarie Primary School will take responsibility for lost money envelopes.

You also have the option to order a sibling photo package online, however please note sibling orders will close at 12pm on Monday, 19 February. We suggest you place your online sibling order as soon as you receive your order envelope with your order instructions.

**Log on to [kapture.com.au](http://kapture.com.au) for your sibling photo order .**  
***Late requests cannot be granted.***

Late payment envelopes cannot be accepted by the school office or by Kapture. You can place an order online for class or individual photographs at any time for the remainder of the current school year however a \$15 fee will apply if you order more than 10 days after photography.

If your child is in a special group photo, you can use the same school code on your order envelope to view and order these photos on Kapture's website, around the time that school photos are ready to be delivered. Please note; class group, individual and sibling portraits are not available to view online.

Kapture offer a money back guarantee for any parent who is not fully satisfied with their photo package. Should you have any queries before or after photo day, please direct them to the Kapture office on 9240 1714 or email [enquiries@kapture.com.au](mailto:enquiries@kapture.com.au).

*All students will be photographed individually on photo day for school administration records AS WELL as included in their class group photo available for purchase to all families. Should there be any reason why your child should **NOT** be included in the photo shoot –please contact the school office.*

Your child's class has been allocated a day for their class photo and portrait. Please contact your child's classroom teacher for any further information.

## **Tuesday 20/02/2018**

Sibling Photos - 8:00-8:55am

Surname A-F

TA21

TA20

TA19

TA18

TA17

TA11

TA14

TA15

TA24

TA25

TA22

TA23

TP4

TP5

## **Wednesday 21/02/2018**

Sibling Photos— 8:15-8:55am

Surname G-L

TA28

TA4

TA5

TA3

TA7

TA26

TA27

TA2

TA29

TA8

TA9

TA12

## **Thursday 22/02/2018**

Sibling Photos— 8:00-8:55am

Surname M-Z

TA19

TA20

TA21

TA10

TP3

Student Councillors

Faction Captains



# Science News

This term in Science we are studying Biological Sciences. We are learning about living things, life cycles, and animal and plant environments and adaptations. To support us in our journey, some students have been bringing their pets to school.



Pictured is Thomas from Year 4, who kindly brought in his pet snake named Sarah! Fortunately it is a baby python and she is safe to handle. We have also been finding plenty of small creatures in our school garden, and investigating the Red Tiger worms in our worm farm.



TA 2: Thomas

## Year 3 Indonesian

This year the Year 3 students are learning Indonesian through the KETAWA Online Indonesian Language Program. They have been enthusiastically learning how to greet people.



Our key words for this fortnight are Halo (Hello), Selamat Pagi (Good Morning), Pak (Sir/Mr), Bu (Mrs, Miss, Ms) and Sampai Jumpa! (See you later/Until we meet again).

TA28 and TA29 look forward to sharing more Indonesian words and an Indonesian song at the next assembly.

## Buddy Class TA 11 & TA 10

Pre-primary TA11 and Year 6 TA10's first buddies meet up: outdoor reading under the trees on Thursday, 15 February

Lily, Oliver, Naylah  
and Christian



Dan, Skye, Jack, Loren and Niquole



Asha and Raymond

Arthur and James





# Mindarie Supports Kids Mental Health

A pod of wildly colourful dolphins have swum into town as part of a vibrant public art trail. They are here to raise awareness of child and adolescent mental health and come with three clear messages:

1. You are not alone
2. It's OK to talk about your feelings and concerns
3. Real help is available

Mindarie Primary School has been participating in The Big Splash Program, which has been developed in response to the alarming increase in the number of children and young people presenting to Emergency Departments with self-harm and attempted suicide—a 400% increase in the last five years.



Savannah, Lucas, Tahlia, Jake and Finn

The program helps teachers and parents navigate the topic of mental health and wellbeing with their students and children. With a focus on building resilience, the program teaches children to recognise their emotions and develop essential coping strategies.

For more information visit the [bigsplashwa.com.au](http://bigsplashwa.com.au).



## Art Trail

20 January – 4 March 2018

A pod of wildly colourful dolphins have swum into town as part of a vibrant public art trail. They are here to raise awareness of child and adolescent mental health and come with three clear messages:

1. You are not alone.
2. It's OK to talk about your feelings and concerns.
3. Real help is available.



**There are 36 stunning dolphin sculptures to discover – see over for locations.**

## Farewell Weekend

Before our amazing dolphins swim off to their permanent homes, we will bring the whole pod together for a special farewell on 17 and 18 March. The Big Splash WA Art Trail doesn't end with the closing of the trail. It continues as a number of dolphins are painted and decorated by children throughout the week, so stay tuned for the Big Splash WA Schools Program.

It's your only chance to see the whole pod in one place along with a host of other special events. There will be some very special prize opportunities as well as family fun and activities. Details of this special weekend will be announced during the trail.

**Save the date! 17 & 18 March**

Follow us on social media @pchfwa or visit [thebigsplashwa.com.au](http://thebigsplashwa.com.au) for all the latest information.



## Things to do:

- Download the Big Splash WA app – over \$10,000 in offers and prizes for just \$1.99
- Start the conversation about kids' mental health as you wander about the trail
- Visit all 36 dolphins – make a day of it or see them over a few days
- Show your dolphin selfies with us on social media @pchfwa and #thebigsplashwaarttrail
- Show your support for kids' mental health by donating at [www.pchf.org.au](http://www.pchf.org.au)
- Take on a The Big Splash WA Challenge ... do the Dolphin Dance, do a Show Out for kids' mental health, or make your own Dolphin Pod – find out more at [thebigsplashwa.com.au](http://thebigsplashwa.com.au)
- Be kind to the dolphin sculptures by not climbing on them or stepping on their delicate tails

## The Big Splash WA Schools Program

The Big Splash WA Schools Program has been developed in response to the alarming increase in the number of children and young people presenting to Emergency Departments with self-harm and attempted suicide – a 400% increase in the last five years.

The program helps teachers and parents navigate the topic of mental health and wellbeing with their students and children. With a focus on building resilience, the program teaches children to recognise their emotions and develop essential coping strategies.

Participating schools receive a series of age appropriate student resources. Kits, each accompanied by a teacher and parent kit. Kits are linked to the school curriculum with student worksheets, games and individual activities, and cater to all mental health resources and organisations able to provide practical support.

For more information contact Perth Children's Hospital Foundation on (08) 9489 1100 or visit [thebigsplashwa.com.au](http://thebigsplashwa.com.au)



## Auction

If you would love to give one for yourself the stunning The Big Splash WA Art Trail dolphins a home, register your interest in our auction by emailing us on [bigsplash@pchf.org.au](mailto:bigsplash@pchf.org.au)

All proceeds from the auction will enable Perth Children's Hospital Foundation to fund innovative programs to support children and young people dealing with mental health issues and at risk of self-harm and suicide.

**Save the date! 16 March**

## Thank you!

The Big Splash WA wouldn't be possible without the amazing generosity of our sponsors and supporters.

<b>Major Sponsors</b>   	<b>Sponsors</b> Anthologie BIG W Charter Hall City of Perth Infinite Wood Westlark Power	<b>Supporters</b> Air and Logistics Cobrix Frostplus Holdings Kwik Logistics Market West M.R.A. Nanokate Perth Children's Hospital Foundation Volunteers Roxey-Petite Swenson Logistics The Mullin Family United Equipment
--	--	--

**Media Partners**  



Perth Children's Hospital Foundation  
A Wild in Art event brought to you by Perth Children's Hospital Foundation

[TheBigSplashWA.com.au](http://TheBigSplashWA.com.au)



## UPDATING STUDENT INFORMATION

Would parents please ensure that all student contact information is up to date at the school. It is vital that we have the correct address and emergency contact details so that valuable time is not wasted in the case of an emergency.

You can now update student information easily by sending a message via the School App, send us an email, pop into the front office or simply give us a call.



Connect is a secure online environment developed 'in-house' by the Department of Education for staff, students and parents in public schools. It will give our teachers a tool to deliver content to the students via an online classroom. This means your children will be able to share with you what they are learning about, easily and safely online.

Teachers can use Connect to keep you updated with information about the class. Things like upcoming events, excursions, classroom activities, photos and stories can be sent to you via email or, if you prefer, via a push notification on your phone. Download Connect Now from the [Apple App Store](#) or [Google Play](#).

## MINDARIE PRIMARY SCHOOL APP

A reminder about the school app. The app is free and can be downloaded directly to your iPhone or android device. The app allows the school to give up to date information to parents/carers.

Once downloaded you will be able to:

- Receive instant push notifications and reminders from the office
- View the term calendar and timetable
- Submit absentee forms
- Submit change of details forms
- Look at the events page for current information
- View school forms
- Watch the virtual tour video
- The app is easy to download. You can follow these links:

<https://itunes.apple.com/us/app/mindarie-primary-school/id663060083?mt=8>

[https://play.google.com/store/apps/details?id=com.app\\_mindarieps.layout](https://play.google.com/store/apps/details?id=com.app_mindarieps.layout)

## 2018 FEES AND CHARGES

<b>Kindergarten/Pre-Primary</b>		<b>Years 1-6</b>	
Phys Ed resource materials \$10	\$10.00	Science consumables \$5	\$5.00
Art/Craft consumables: Stationery \$10, Craft materials \$10	\$20.00	Art/Craft consumables Stationery \$10, Craft materials \$10	\$20.00
Language consumables: Resources \$10, Stationery \$5	\$15.00	English: Library resource materials \$10	\$10.00
Photocopy supplementary to all learning areas	\$15.00	Photocopy supplementary to all learning areas	\$15.00
		ICT, Computing consumables \$10	\$10.00
<b>TOTAL CONTRIBUTION</b>	<b>\$60.00</b>	<b>TOTAL CONTRIBUTION</b>	<b>\$60.00</b>

The School Board would like to point out that the contribution per child (\$60.00) equates to \$1.50 per week over the course of the school year. We also point out that all contributions are used for the direct benefit of the children. Our aim is to raise our community's contribution rate to at least 85% for the benefit of all our children.

*Contributions can be paid by direct debit to BSB 016 338, Account 3409 09309 (enter student's full name and "2018 Contributions" in payment description field. EFTPOS facilities and payments by cash and cheque can be made at the school office. We are more than happy to arrange payment plans if required. Please arrange at the school office.*



# ASSEMBLY

## Achievement Certificate Recipients Thursday 8 February 2018



TA 2	Jessica	TA 4	Rylee and Trent
TA 5	Madison and Archie	TA 7	Hudson
TA 9	Labron	TA 11	Charlie and Naylah
TA 14	Kai and Chloe	TA 15	Indie
TA 17	Jane and John	TA 18	Isabel and Chase
TA 19	Chayse	TA 23	Liam and Jamie
TA 24	Max	TA 26	George
TA 27	Olivia and Cara	TA 28	Kaiden and Daniel
TA 29	Spencer and Louis	TP 3	Freya and Bella



# Well Done!

## ASSEMBLY

Our students were hugely entertained by the New Teacher skit at last week's assembly. Thanks to Mrs Morrison, Miss Evans, Ms Chester, Mr Gould, Miss S and Miss O'Shea for putting on such an amazing performance.



## P&C NEWS

The Mindarie Primary School P&C Association AGM will be held Wednesday, 7 March from 7pm onwards in the school staffroom.

Everyone is welcome to attend.

## COLES SPORTS FOR SCHOOLS

The school is collecting vouchers for the Coles Sports for Schools Program. The vouchers will be exchanged for sporting equipment for our kids. For every \$10 you spent you get one voucher.

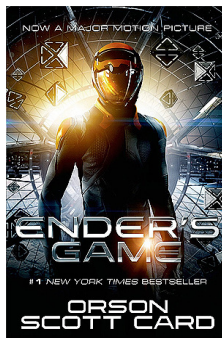
Please encourage family, friends and neighbours to support our school. We have collection boxes at Ocean Keys Coles and at the school office.



## BOOK CLUB

We invite Parents and Staff to join our Mindarie PS Book Club.

Our school librarian, Sharna O'Sullivan, has kindly offered her time to support our group. Each month we will discuss a different book chosen by a member of the group.



Meeting will run once a month on a Thursday night from 7:30pm to 9:30pm.

Our next meeting is Thursday, 15 March and we will discuss Ender's Game by Orson Scott Card.

There is no membership charge but you will need to access each book yourself, whether borrowed or purchased. You will occasionally be asked to bring a plate of food to share. BYO wine.

## LUNCH ORDER DAYS

Subway—Friday, 23 February

Pizza—Friday, 2 March

Subway—Friday, 9 March

Pizza—Friday, 16 March

To order:

[ouronlinecanteen.com.au](http://ouronlinecanteen.com.au)



## 2018 SCHOOL TERM DATES

### Term 1:

Wednesday, 31 January to Friday, 13 April

### Term 2:

Monday, 30 April to Friday, 29 June

### Term 3:

Monday, 16 July to Friday, 21 September

### Term 4:

Tuesday, 9 October to Thursday, 13 December

## 2018 SCHOOL DEVELOPMENT DAYS STUDENTS **DO NOT** ATTEND SCHOOL

### Term 1:

Monday, 29 January & Tuesday, 30 January

### Easter Break:

Thursday, 29 March to Tuesday, 3 April

### Term 2:

Monday, 28 May and Wednesday, 27 June

### Term 4:

Monday, 8 October & Friday, 14 December

## SCHOOL START AND FINISH TIME

**Starts at 8.45am and finishes at 2.45pm EVERY DAY**

If you have to make other arrangements for the collection of your child please remind children and the class teacher before school as it is not always possible for office staff to get the message to the children. We will endeavour to do so but we cannot guarantee we will get the message to them on time.

## SCHOOL GATE OPEN AND CLOSE TIMES

Main front gates –

Open from 8.00am. Open all day.

Other gates –

Opened at 8.15am. Closed at 9.00am.

Opened at 2.30pm. Closed at 3.15pm.

## KINROSS COLLEGE MUSIC INFORMATION NIGHT INVITATION



To all Year 6 students and families,

Kinross College would like to extend an invitation to all Year 6 students and their families to our annual Music Information Night.

This night includes a short presentation of what is offered at Kinross College in regards to music as well as performances by some of our students, a chance for students and parents/guardians to meet our music teachers/tutors and an opportunity to collect any forms for the Music Enrichment auditions and instrumental lessons in preparation for 2019.

**This event will take place on**

**Monday 12 March, 2018**

**6:00 -8:00pm**

**Performing Arts Block, Kinross College**

**ALL BOOKINGS (FREE EVENT) MUST BE MADE AT <https://www.trybooking.com/UDPK>**

For more information or to answer any questions you may have, please feel free to contact our music teacher, Miss Ashlyn La Cava on 9306 6000 or at [Ashlyn.lacava@education.wa.edu.au](mailto:Ashlyn.lacava@education.wa.edu.au).

Kind Regards,  
Kinross College

## BEWARE!! HEAD LICE SEASON IS UPON US

Head lice are extremely contagious and it really doesn't have anything to do with personal hygiene...

95% of lice are transmitted through close contact, which means sharing hats, head bands and pillows make it more difficult to control head lice.

Ensure that you are protected from head lice this season and take the necessary preventative steps to keep away head lice.

**Below are four crucial steps to keep your school head lice free:**

- Avoid sharing clothing: especially hats, ribbons, head bands and helmets
- Discourage children from playing with each other's hair
- Don't share brushes, combs, towels and pillows
- Keep long hair plaited or firmly tied back to prevent contact from other kids

**We hope that the above tips will help you keep head lice away for good!**





**Mindarie Keys Early Learning School**  
Family owned, leading education and care for children aged 0-12.

-  Early education and care from birth to 5 years at Mindarie Keys Early Learning School
-  Three Plus, based at Mindarie Primary School, offering a school readiness program
-  Outside School Hours Care, Before School, After School and an exciting Vacation Care

Our highly qualified educators are passionate about providing your child with what we are well known for, loving care and a head start in their educational journey.



*A child, more than anyone else, is a spontaneous observer of nature.*



NURTURING GROWING MINDS




Please join us at the  
**NEW**

**Mindarie Playgroup**

A Playgroup for children aged 0-4 and their families.

**Where:** Mindarie Primary School, in the undercover area

**When:** Fridays from 8:30am – 10:30 am  
(excluding school holidays)

Please bring a hat & a piece of fruit to be shared.

**At Playgroup....**

- You can have fun playing with your child
- You can meet other parents
- Your child can become familiar with the school environment ready for future years

For more information, please call Karen Anderson on 0494 885 043.



### TEEN MINDFULNESS

Simple & Inspiring Techniques in Mindfulness & Using Energy Wisely  
Where Your Teen Can Feel Supported & Discover the Joy of How to  
Release Exam Stress, Anxiety & Peer Pressure

**6 WEEK WORKSHOP STARTS**  
**15 FEBRUARY 2018**  
**THURSDAYS 4.30-5.30PM**



**FACILITATOR - JEN TAYLOR**  
**TRANS GENESIS, CLARKSON**  
**ENQUIRIES 0449-698070**

  
**MINDARIE KEYS**  
EARLY LEARNING SCHOOL

..... *Est 2003* .....

**THREE PLUS KINDY PROGRAM**

..... *Special offer* .....

**TRY OUR PROGRAM & GET YOUR FIRST WEEK FREE!**  
\*Conditions apply



Prepare your child for a successful  
transition to school with our trusted  
Specialised School Readness Program.

.....



Mindarie Keys Three Plus Kindy, Early Learning School and Outside School Hours Care are rated 'EXCEEDING' National Quality Standards. Our programs focus on early literacy and numeracy through varied, fun, play-based experiences in a supportive and nurturing environment.

[www.mindariekeysearlylearning.com.au](http://www.mindariekeysearlylearning.com.au)